

contrast The Radical Concept



www.contrast-racing.com

CARS

TYRES

ENGINES

BODYWORKS

SPARE PARTS

OPTIONALS



CATALOG 2007

contrast NEO2

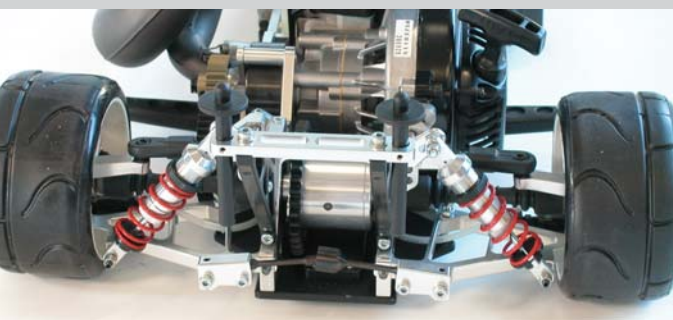


Race's Spirit

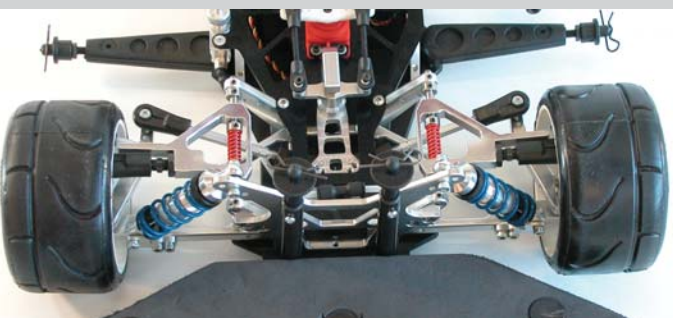
The Contrast Neo2 is the logical evolution of the successful design of the original Neo1. The Contrast Neo2 represents the highest technology applied to the greatest competition. Everything in the new car has been designed to improve its performance, features and its mechanic easiness: weigh under the legal minimum, the lowest gravity centre of the category, its rigid chassis ideal for competition, its powerful traction capacity and its agility in any kind of tracks. Aesthetics has also developed to a new image, radical, modern and aggressive, which shows all its high technology applied in this 1/5 born to run... born to help you win.



The thought low position of all the car's elements produces an extra-low total gravity centre which favours the performance of the chassis and the traction in all the moments of the race. The elements of the chassis are grouped towards the centre to diminish the polar moment of inertia and to improve agility in the turns.



The diagram of suspensions thought by technological simulation treats the tyres in a delicate way enlarging its lifetime and it allows using a softer tyre with no danger of degradation. This, together with the new shock absorbers and strong stabilizer bars, gets an exceptional chassis performance, with a great driving easiness to drive in a relaxed way at a record rhythm in each turn.



The new front suspension redesigned in the Neo2 makes the inclination of the shock absorbers easier and improve its vibration frequency related to the wheel, being closer to the middle point of the tyre. The Neo2 also includes the security system of the upper front arms through springs to avoid damages in frontal crashes. A unique system in RC created by Contrast.

Main features

- Wheelbase: 53,5 mm (with 3° Toe in in rear axis)
- Front width: 39,5 mm
- Rear width: 39,1 mm
- Total weight: 9,60 kg (ready to run, without ballast, with body and battery)
- Weight distribution: 40,5% on front axis, 59,5% on rear axis (with the ballast mobile is possible to change this distribution)
- Material: 100% aluminium 7075 T6
- Kit: It is given disassembled and without bodyshell, with assembly handbook and recommended set-ups.

NEW REAR BODDY SUPPORT

NEW DAMPERS

NEW COAT FOR CLUTCH

NEW PIPE SAMBA 5

NEW FRONT SUSPENSION

NEW REAR LOWER ARMS

NEW CHASSIS

NEW BLACK COLOR COAT

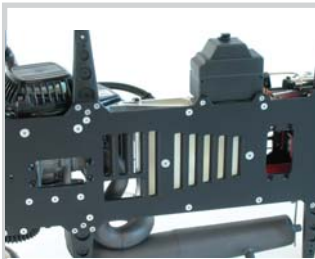
Contrast Neo2



Rigidity in a chassis is really important in a race car. Traction, the operation of shock absorbers and the general agility of the car depend on it. The Contrast Neo offers you the possibility of choosing and regulating the chassis' rigidity according to your tastes and the conditions of the track, thanks to some strategic joint points that use the engine to become the chassis in a totally rigid and unbending box for conditions of much grasp or with a soft flexion for more sliding tracks.



150064 Alloy rod end M8



The Neo2's new chassis, apart from its aggressive black colour, offers a pair of new features such as the great entry of air with new orientation that refrigerates the engine, the manifold of the exhaust pipe and the gas tank. The chassis has been shortened in its rear part to avoid the contact with the floor in closed bends with holes. The places have been kept to put ballasts and to modify the gravity centre according to the driver's tastes.



150236 Transmission kit w/balls



Perhaps the most important change in the Neo2 is the new diagram of the front suspension with new shock absorbers, new upper arms, new shocks support and a small connecting rod in the lower arm that brings the socket joint of the shock absorber near to the middle point of the wheel. With this re-design we get a higher frequency of the shock absorber response, a closer relation to the wheel movement and higher possibilities of the damper inclination.



150201 Clutch kit Contrast Race



Since the Neo1 at Contrast we offer you the possibility of combining the three available pinions (22, 23 and 24) with the three plastic gears (39, 40 and 41) obtaining a great number of combinations with very slight differences to be able to vary to the maximum the adjustment of the transmission in every track. This possibility, together with the thought ratios of transmission in the differential, offers you an instant acceleration with a very soft touch of throttle to be able to outdistance from your rivals in every bend way out.



150022/1 New rear body support



contrast NEO2 Maxi-Tuning



Maxi-Tuning

The full options one

For those who want the maximum, for those who don't want to wait, for the drivers who have it very clear in mind we have created the Neo2 Maxi-tuning. All the quality and features of the Neo2 completed with all the optional parts that you will need to get all the possible set-ups. The Maxi-tuning is a Neo2 plus all this:

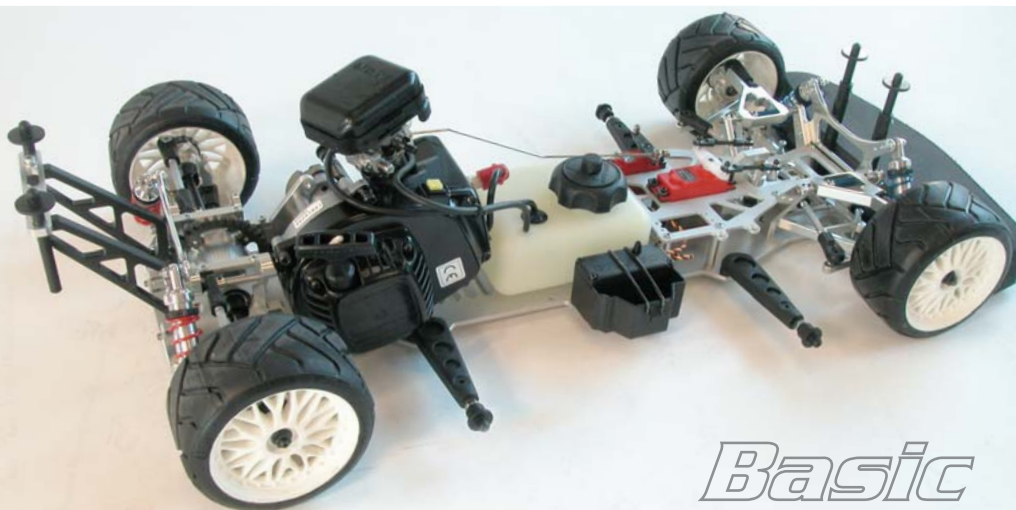
150003	Subchasis Neo carbon	150110/3	Orange damper spring 2,0mm	150111/17	Damper oil 10000
150101	Front damper support carbon	150110/4	Red damper spring 2,1mm	150111/16	Damper oil 9000
150103	Rear damper support carbon	150110/5	Blue damper spring 2,2mm	150111/15	Damper oil 8000
150085	Kit front anti-roll bar 5mm	150110/6	Violet damper spring 2,3mm	150097	Set fast supports for dampers. 4u
150084	Kit front anti-roll bar 6mm	150110/7	Green damper spring 2,4mm	150095/11	Set ceramic bearings for wheels 8u
150089	Kit rear anti-roll bar 3,5mm	150110/8	Black damper spring 2,5mm	150021/3	Side guards carbon
150088	Kit rear anti-roll bar 4mm	150202/7	Set "black power" clutch shoes 2u	150202/66	Hard spring for clutch 3.0
150087	Kit rear anti-roll bar 4,5mm	150269	Set brake disk, fiber or steel 2u	150017	Kit supports chassis/engine
150087/5	Kit rear anti-roll bar 5mm	402004	Motor tuning CONTRAST 23cc		

To get off to a good start



contrast NEO2 Basic

Would you like to become part of Neo family in an economic and progressive way? Would you like an economic car but in a future, able to take part in competitions? The Neo Basic has been made for you. It has the same basic pieces that the



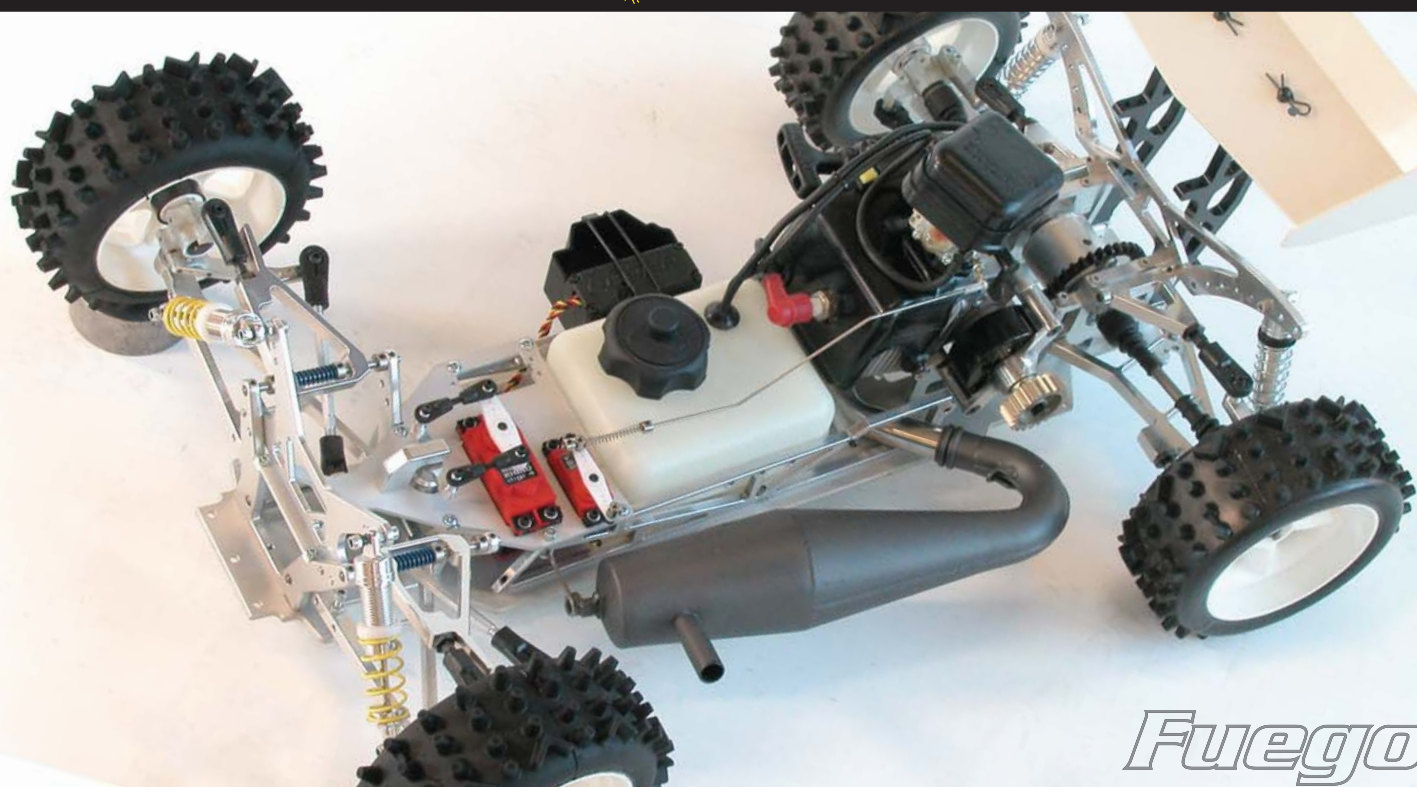
Basic

Neo for competition has: chassis, arms, main supports, steering blocks, everything made in aluminium 7075T6 but without the special parts that increase the price, such as hydraulic brakes, side supports, adjustable clutch, etc...

The Neo Basic can be completed with all the options and special Contrast pieces to become a real Neo2 for competition at the rhythm you wish. In this way, you decide when and with what expense you want to evolve in the 1/5 category.

*These features can change in the final version of the car

FUEGO 1:6 OFF ROAD



Fuego

FUEGO is the new car of Contrast for the Great Scale "off road". The Fuego collects all the experience and knowledge obtained in the development of the Contrast Neo touring car and it applies them to the OFF ROAD driving. The Contrast Fuego, in the same way as its brother Neo2, is a radical car, resistant and fast, thought for pure competition, but also open to a quiet use as only a hobby thanks to driving easiness and its mechanical simplicity. We have created a small and light mechanic but taking care of the most important thing in "off road" driving: **RESISTANCE**.

The Contrast Fuego's chassis keeps some of the characteristics of its track brothers such as the points to increase rigidity joining it to the engine and the places for the mobile ballasts, but the inclination of the front part outstands as it has been elevated 10 degrees to improve the landing of the jumps, its passing on holes and the driving easiness when improving the caster angle.

The Contrast Fuego has been designed following the last EFRA rules which allow 48cm wide. The Fuego takes advantage to the limit these rules improving traction, stability in any situation and improving the resistance to overturn. The suspension diagrams allow a great amount of different adjustments and numerous shock absorber inclinations to adapt to the most diverse situations and surfaces.

With a great distance of suspensions both in compression and in extension the Contrast Fuego overcomes any obstacle or jump with no problem and not losing traction. The Contrast Fuego is totally prepared to incorporate the Contrast hydraulic brakes in the four wheels with a third servo for the front set. With a good hydraulic braking you will be able to take advantage of all virtues of the chassis and its great traction.

Main Features *

- Wheelbase: 50,5 mm (with 3° of rear toe in)
- Total width front/rear: 48 mm / 48 mm
- Weight distribution: 41% in the front axle, 59% in the rear axle (with the ballast mobile is possible to change this distribution)
- Engine: Zenoah G260 RC, 26 cc

*These features can change in the final version of the car

- Material: 100% aluminium 7075 T6
- Kit: It is given disassembled with bodyshell and rear wing, with assembly handbook and recommended set-ups.
- The kit include: Front hydraulic brakes, adjustable clutch, fast change system for differential, PMT tyres, front safety system, etc.

Spare & optional parts

Parts Contrast



150003 Subchasis Neo2 carbon



150101 Front dampers supp. carbon



150103 Rear dampers supp. carbon



150021/3 Set side guards carbon



150202/8 Set "Red Power" clutch shoes



150201 Kit Contrast clutch



150219 Kit alloy transmission kit



150095 Set ceramic bearings



150270 Conversion kit to fiber discs



150120 Kit shock absorber



15008x Anti-roll bars



404108/88 Set canal admission 4u



15020x Alloy transmission pinions



15021x Hi-tech plastic gears



15001x Ballast, 350,260 i 190gr.



150082 Set wheel cube 12,5mm

Universal parts for Large Scale



150200 Kit universal clutch



150206 Clutch bell



150064 Alloy rod end M8



150224 Anti-slip differential



150110/x Damper springs neo 1/5



150111/x Damper silicon oil



300010 Special screws set little head M5x16 for ball cup



150068 Set ball cup 5mm 5u



150258 Kit hydraulic brakes



150268 Set steel disc brakes 2u



150097 Dampers fast support



801022 Set-up base 10 y 12mm

Tyres



Contrast Racing uses PMT wheels. The tyres of the Pauselli Model Tyres offers a great balance between grasp and resistance; and they have managed the best compromise with speed and driving easiness. PMT and Contrast offer you a wheel model for every situation.



PMT Kronos 1/5



PMT Eclipse 1/5



PMT Eagle Rain 1/5



PMT F1 Front



PMT F1 Rear



PMT F1 Eagle Rain

Exhaust pipes



Pipe Contrast OEME



Pipe Samba 5

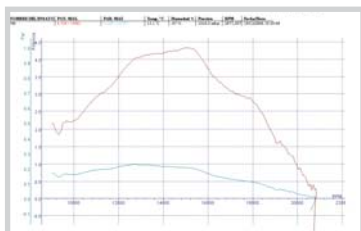
Dyno test

Contrast and the engineering firm OEME have developed the first professional Dynotest machine thought and designed for the great scale engines, gopeds and mini-bikes. This inertial Dyno is able to read the power, the pair and the time of acceleration of engines between 15 and 80 cc and it is the most useful tool for the professional tuning man and for the user who always looks for the best of his hobby.

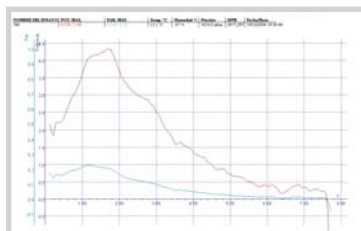
A great test center that centro de pruebas that will be with you during your life as driver or mechanic.

Main Features

- Type: Inertial Dynamometer for engines from 15 to 80 cc and 15hp
- Inertia: 0,24 kg/m²
- Ratio gears: 7:1
- Results: Torque and power versus rpm and acceleration time
- Brake: Mechanical system with disc 230 mm diameter
- Additional: Read temperature sensors.
- Total weight: 66,5 kg
- Captación: Magnetic sensor with interface & software SportDyno 3.2
- Adjustable to other engines



Power and torque versus RPM



Power and torque versus time

Engines

Contrast is the authorized distributor of Komatsu Zenoah, the worldwide leader branch in great scale automodel's engines. We want to offer to the users of Zenoah the best distribution of these powerful engines and a fast and complete technical assistance both in spares and in advice and training.



Zenoah G230RC 23cc



Zenoah G260RC 26cc



Spare parts and optional

To have a good engine is essential in competition and nowadays the best tuning men are able to get even a 50% of improvement over the original engine. At Contrast we look for the most evolved tuners to be able to offer you the best car with the best engine.

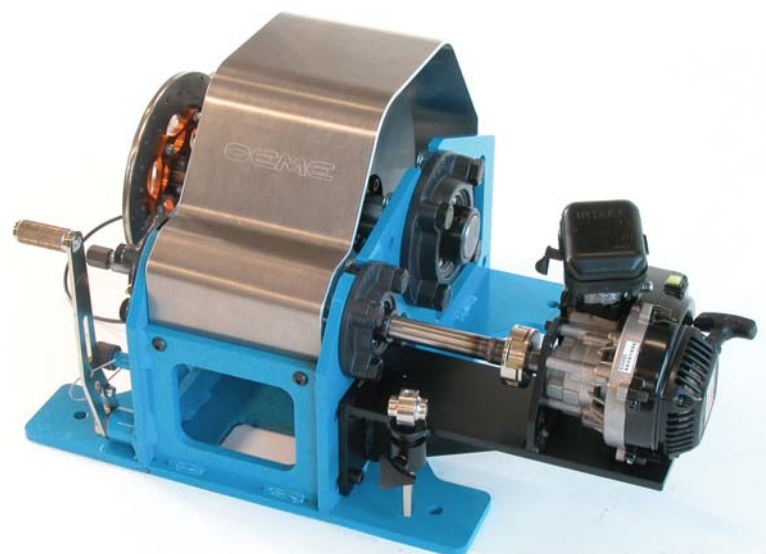


Zenoah tuning 07.2



Zenoah tuning 07.4

A two stroke engine is nothing without a good exhaust pipe. Contrast and OEME have developed a compact exhaust pipe in straight line which increases the power in all the range of rpm with powerful low and high parts that keep pushing beyond 21000 rpm. With a distinct concept, putting first the placement in the chassis and its low gravity centre, the Samba 5 is an ideal exhaust pipe for all situations and to improve the chassis performance.



230 mm brake disc



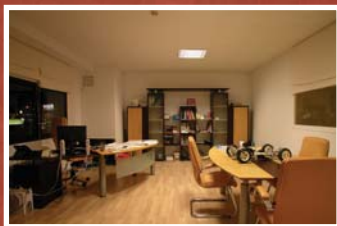
Gears and inertia wheel

Contrast is passion for cars, for driving, passion for speed. Contrast is a way of understanding automodell RC. It is a relaxed Sunday coffee at the tracks with friends and also it is the tension of a classificatory round or the nerves of a countdown at the start line.

Contrast is competition, Contrast is fondness but over all Contrast is technology.

The technology you need to win....with passion.

The Contrast team



Contrast Racing is placed in a 1000m2 industrial building located in the industrial area of Blanes, in the northeast of Spain, where the well-known tourist area of Costa Brava begins. We are placed in one of the most industrialized areas of Spain, with countless services, communications and first worldwide level industrial suppliers at our disposal.



Successes

- Spanish Champion and Vice-Champion 2006
- Spanish Champion 2005
- Spanish Champion 2004
- Champion of Venezuela 2005
- Vice-Champion Portugal 2006
- Finalist Euro-Championship 2006
- 2th at Worlds Warm up 2005



www.contrast-racing.com
info@contrast-racing.com



Avenida de la estación 70, nave 4 - 17300 Blanes (Girona) SPAIN
Tel. +34 972 354 865 - Fax +34 972 333 510
www.contrast-racing.com - info@contrast-racing.com